



# ReloTracker Presents:

**A**utomatic  
**T**ransfers of  
**R**elocation  
**I**nformation

# What is ATRI?

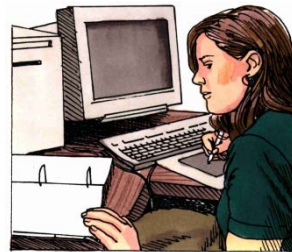
- The ability to send relocation information automatically between systems:
  - Transferee details
  - Services required
  - Status updates
  - Uploaded documents
  - Lease/Tenancy details, schooling, immigration, etc.
- Basically everything that might otherwise need to be sent via email or by logging into another system.

# Why ATRI?

The provision of relocation services can involve personnel from different companies, each with their own system.



Relocation  
Management Company



Destination  
Services Provider



Field Consultant

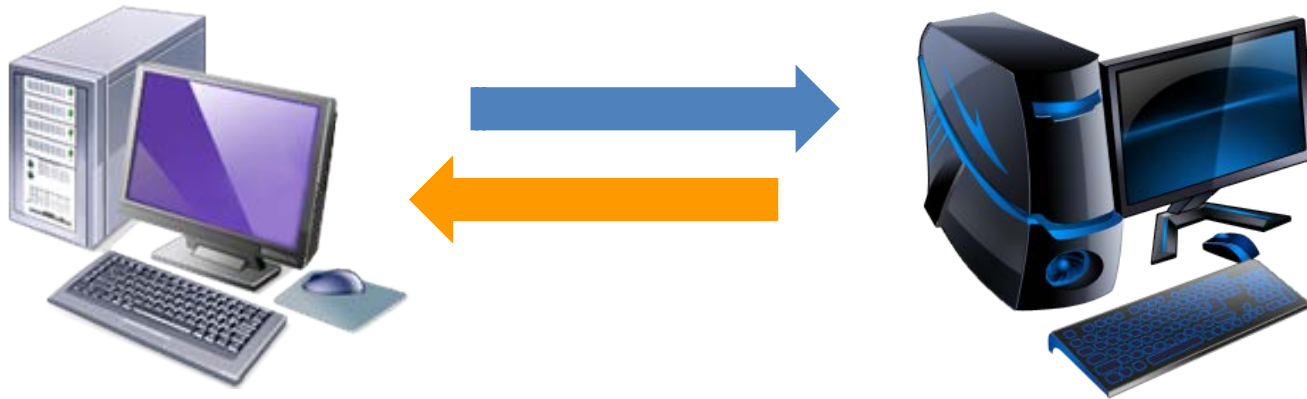
Increasingly, even traditional DSPs sometimes manage outbound or third-country relocations.

# Why now?

- More and more DSPs are implementing IT systems:
  - Better operations management
  - Improved reporting, quality management.
- Getting information between systems requires copying & pasting:
  - Time-consuming
  - Introduces errors
  - Causes delays.

# How does it work?

1. Creates a secure two-way link between two systems.
2. Decide which relocations to share.



3. Afterward, the transfer of information is automatic.

# Who sees what?

- The standard visibility rules of ReloTracker apply:
  - If a company sends a relocation to your system, then anything you mark “Visible to the Customer” will be sent to their system.
  - If you have sent a relocation to another system, then anything you mark “Visible to the [External] Consultant” will be sent to their system.
- See the documentation for more detail.

# Is it secure?

- Yes: Two systems can only be linked by the exchange of security keys between the companies, by email.
- Yes: The other party cannot “look” in your system; ATRI only sends messages between the two systems.
- Yes: All messages between systems are encrypted.

# What if I don't want it?

- No problem. We do not create links between systems. Only you can do that.
- On the other hand, we are working with Global RMCs and other service providers to link systems. We believe that this is the future of the relocation industry.



# Next steps

- See the documentation: ReloTracker ATRI.docx.
- Contact your partners to see if they support the ATRI standard.
- Contact ReloTracker Support with any questions.